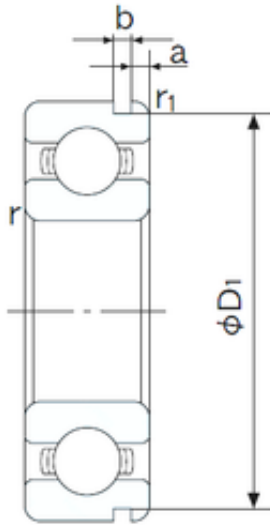




Cylindrical Roller Bearings-VIETNAM C...



90 mm x 190 mm x 43 mm NACHI 6318N deep groove ball bearings

Bearing No. 6318N

6318N Bearing 2D drawings and 3D CAD models

Size	90x190x43 mm
Bore Diameter	90 mm
Outer Diameter	190 mm
Width	43 mm
d	90 mm
D	190 mm
B	43 mm
C	43 mm
a	5.69 mm
b	3.5 mm
r min.	3 mm
r1 min.	0.5 mm
D1	183.64 mm
Weight	4.91 Kg
Basic dynamic load rating (C)	143 kN
Basic static load rating (C0)	107 kN
(Grease) Lubrication Speed	3400 r/min
Bore Type	Cylindrical Bore
Enclosure	Open
Configuration	Single Row
Bore Size	90 mm
Outside Diameter	190 mm
Width	43 mm
Fillet Radius/Chamfer	3 mm
r1	0.5 mm



Cylindrical Roller Bearings-VIETNAM C...

Groove Width	3.5 mm
Groove Diameter	183.6 mm
a (max)	5.7 mm
Dynamic Load Rating	143,000 N
Static Load Rating	107,000 N
Limiting Speed - Grease	3,600 rpm
Limiting Speed - Oil	4,300 rpm
Factor fo	13.3
Radial Clearance	0.012 to 0.036 mm
da (min)	104 mm
Da (max)	176 mm
Dx (min)	205 mm
ra (max)	2.5 mm
Cy (max)	8.4 mm